

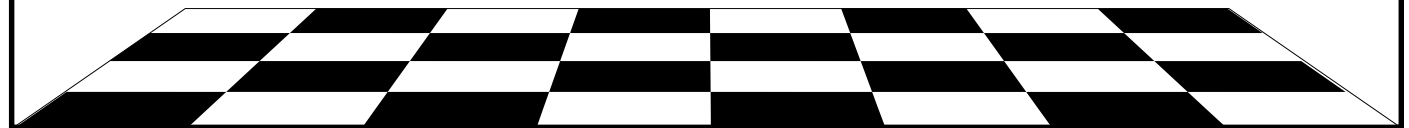
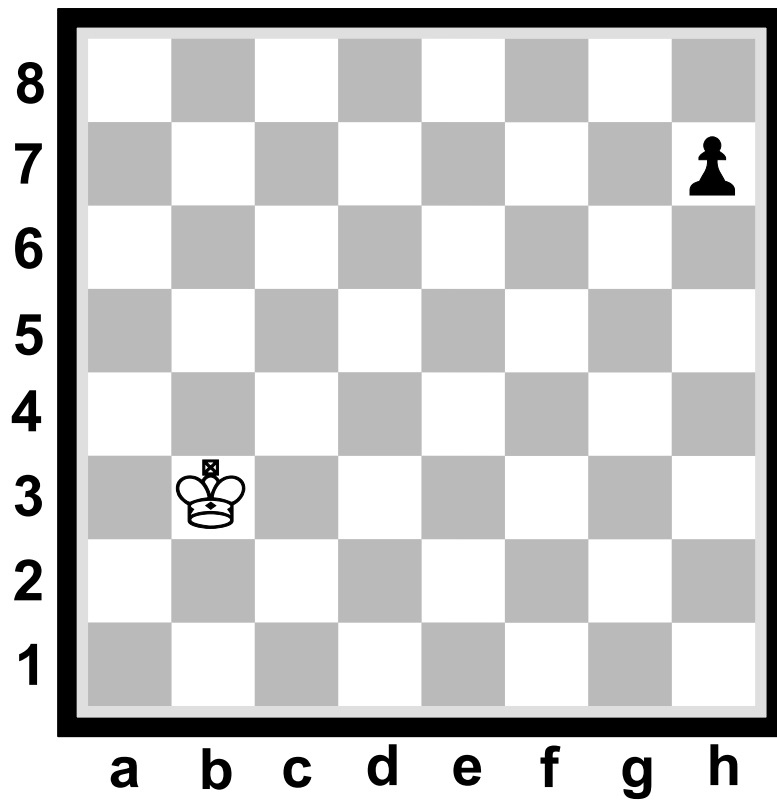
Activity 8a

Practice Square of the Pawn



Will the White King capture the Pawn in this position?

It's Black's move.

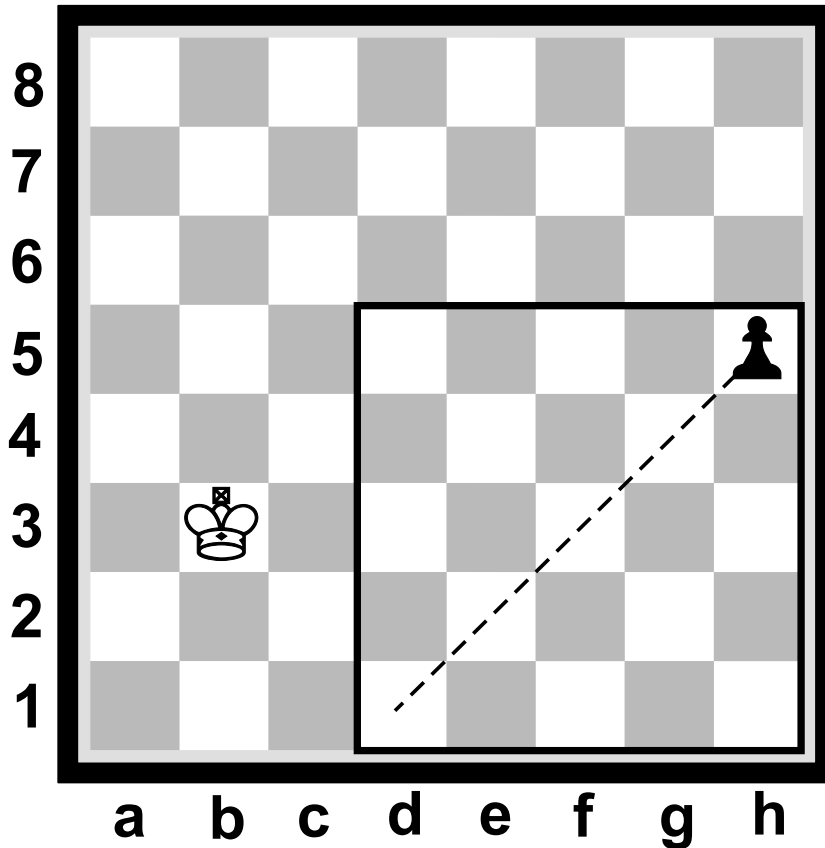


Answers to Activity 8a

Practice Square of the Pawn



No, the Pawn can move 2 spaces on its first move, so the King can't catch it before it reaches the Queening square.



#	WHITE	BLACK	#	WHITE	BLACK
1	...	h5	4	Ke3	h2
2	Kc3	h4	5	Kf2	h1(Q)
3	Kd3	h3			



Black wins the race and Queens safely.

