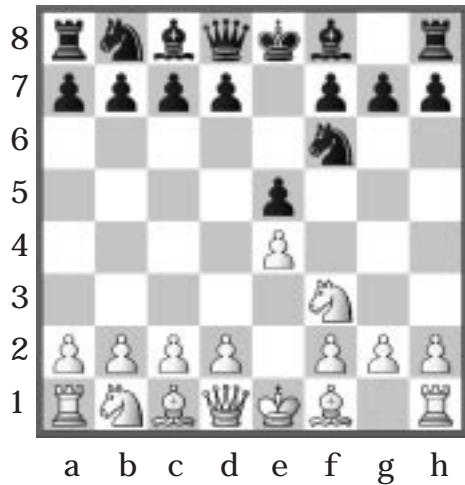


Activity 18

Two Knights Defense, Part 1

Puzzles 1 & 2

Puzzle 1

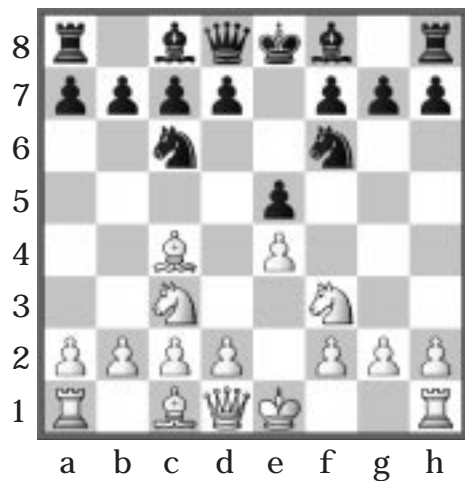


Both sides are fighting for control of the center, rapidly developing pieces and preparing to castle early.

So, what's wrong with this picture if you're playing the Two Knights Defense?

Note: If Black moves Nf6 on the second move, it is Petroff's Defense.

Puzzle 2



Move 4, Nc3, is a slightly inferior move often made by White. It does develop a piece and protect the Pawn, but it does not attack. A better move would be Ng5.

What is Black's best move?

Turn the page
to find the answers
to these puzzles.

